

# Design Service

The Garden Studio offers a number of garden design options, from a total redesign of your garden to simple design advice and suggestions from our qualified staff.

## The Design Process:

1. Visit one of our two showrooms and browse around our ten 'Living Area' gardens. These provide inspiration and ideas you may want to introduce into your own garden.
2. Arrange a FREE initial consultation with one of our designers, either in store or in your own home.
3. Decide on one of the design options detailed that suit your requirements.
4. Choose from the vast amount of products available in store, from natural stone paving to a decorative pergola or summerhouse, which can be incorporated into your design.
5. Let The Garden Studio create the garden of your dreams for you.
6. Finally you can take the design and recreate it in your garden or let The Garden Studio do it for you.

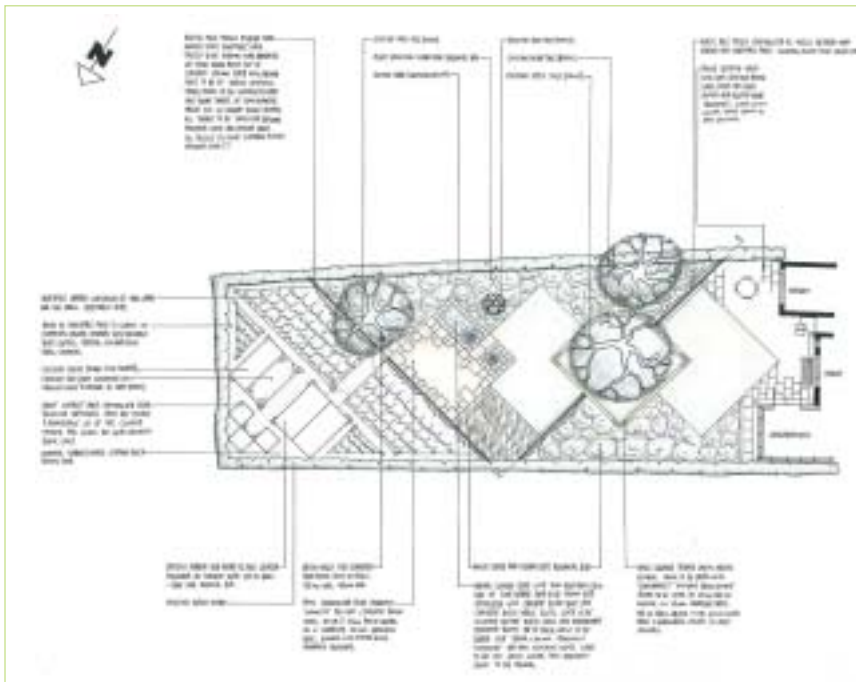
Size of Plot	Basic Design	Master Plan B&W	Master Plan Colour
Up to 100m <sup>2</sup>	£100	£350	From £450
Up to 200m <sup>2</sup>	£200	£450	From £550
Up to 300m <sup>2</sup>	£400	£650	From £750
Over 300m <sup>2</sup>	P.O.A.	P.O.A.	P.O.A.

### Additional Options:-

Elevation Drawing - From £100

3D (Axonometric) Drawing - From £100

Planting Plan - + 50% of design cost



### Master Plan

A detailed scale plan of your garden taking into account the elevations, shape and required items and style. This will identify the different areas within the garden, for example the hard landscaping, dining/patio area, ponds and water features, along with lawn areas and flower beds. This is available in black and white or in colour.

From **£350**

